



X-NA-E Series Datasheet



- 25 and 50 mm travel
- Up to 30 mm/s speed and up to 25 N thrust
- Built-in controller; daisy-chains with other Zaber products
- Built-in, 250 CPR, motor encoder provides slip/stall detection and recovery
- Designed to replace standard micrometer heads on manual translation stages
- Hardened ball-tip (removable so you can use the built-in threaded tip or a flat tip)

Please see our TSB linear slides for more information on compatible slides.

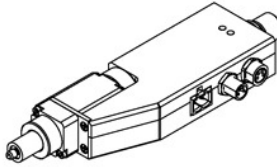
Zaber's X-NA-E Series devices are computer-controlled, motorized linear actuators with high thrust and speed capabilities and a compact size. They are stand-alone units requiring only a standard 24 V or 48 V power supply. The built-in motor encoder allows closed-loop operation and slip/stall recovery features. An optional indexed knob provides convenient manual control for versatile operation even without a computer.

These actuators connect to the RS-232 port or USB port of any computer, and they can be daisy-chained with any other Zaber products. The daisy-chain also shares power, making it possible for multiple X-Series products to share a single power supply. Convenient locking, 4-pin, M8 connectors on the unit allow for secure connection between units. At only 20 mm high, these miniature actuators are excellent for applications where a small profile is required. Like all of Zaber's products, the X-NA-E Series is designed to be 'plug and play' and very easy to set up and operate.

Drawings

ZABER

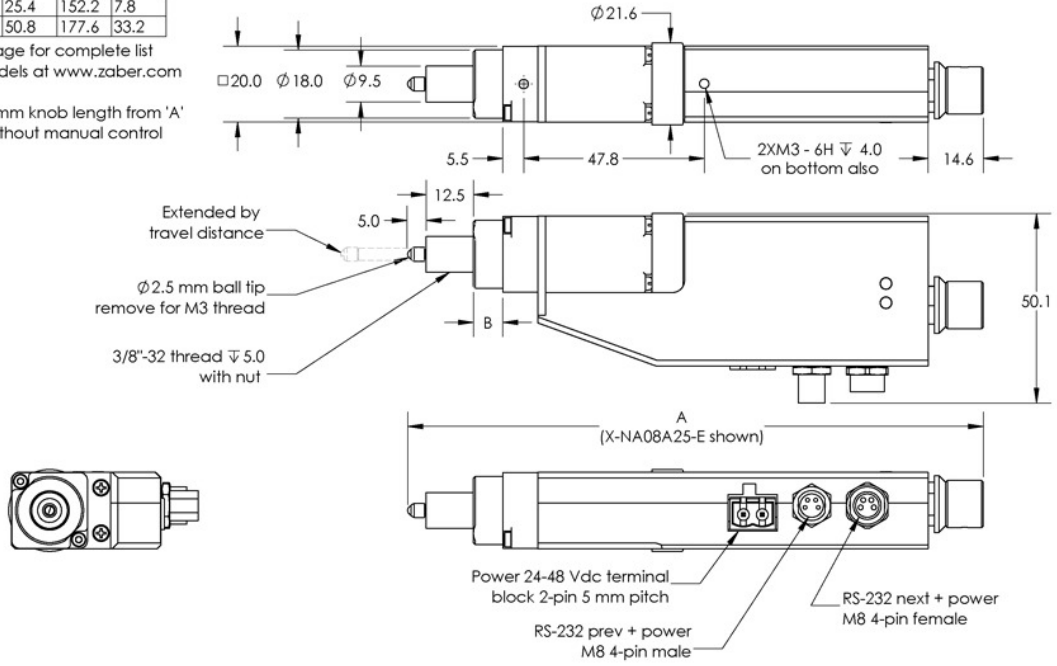
X-NA-E Micro Linear Actuator With Built-In Controller
 dimensions in mm



Model Number*	Travel	A**	B
X-NA08A25-E	25.4	152.2	7.8
X-NA08A50-E	50.8	177.6	33.2

*See product page for complete list of available models at www.zaber.com

**Subtract 13.1 mm knob length from 'A' for -S versions without manual control



DWG 1105 Rev 1

Specifications

Specification	Value	Alternate Unit
Built-in Controller	Yes	
Microstep Size (Default Resolution)	0.047625 μm	
Travel Range	25.4 mm	1.000 "
Accuracy (unidirectional)	15 μm	0.000591 "
Repeatability	< 1 μm	< 0.000039 "
Backlash	< 4 μm	< 0.000157 "
Maximum Speed	30 mm/s	1.181 "/s
Minimum Speed	0.000029 mm/s	0.000001 "/s
Speed Resolution	0.000029 mm/s	0.000001 "/s
Encoder Resolution	250 CPR	1000 states/rev
Encoder Type	Rotary quadrature encoder	
Peak Thrust	25 N	5.6 lb
Communication Interface	RS-232	
Communication Protocol	Zaber ASCII (Default), Zaber Binary	
Maximum Current Draw	180 mA	
Power Supply	24-48 VDC	
Power Plug	2-pin screw terminal	
Motor Steps Per Rev	200	
Motor Type	Stepper (2 phase)	
Inductance	1.5 mH/phase	
Default Resolution	1/64 of a step	
Data Cable Connection	Locking 4-pin M8	
Mechanical Drive System	Precision lead screw	
Limit or Home Sensing	Magnetic hall sensor	
Manual Control	Yes	
Axes of Motion	1	
LED Indicators	Yes	
Mounting Interface	3/8-32 nut, 3/8" shank, or M3 screws	
Vacuum Compatible	No	

Specification	Value	Alternate Unit
Operating Temperature Range	0 to 50 °C	
RoHS Compliant	Yes	
CE Compliant	Yes	
Weight	0.18 kg	0.397 lb

Charts

Thrust Speed Performance

